

LORAD 1.5 CS-US MAINS CORD SET

Screened Mains Cord Set, 125V/15A

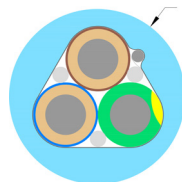
Gauge: 3x1.5mm² / AWG 15

Rev.date: 2022-08-30

Customs tariff no: 8544499500

Country of origin: Sweden

- Screened mains flex cable
- Gold plated Connectors
- Tin plated OFC wires - Corrosion resistant
- Protects both from electric & magnetic fields.



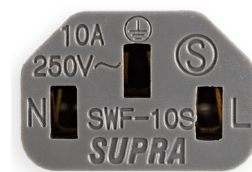
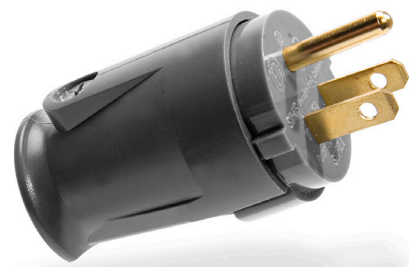
LoRad - Low Radiation

Shielded cord set comprising Supra LoRad 3 x 1.5 mm² cable, Supra SWF10 female connector (IEC-320) and Supra SW-US male plug. Current rating 15 A continuously. The US-version, with straight Nema plug, is the most common standard throughout America. Fits our LoRad mains power distribution blocks. LoRad means Low Radiation and the design of these mains flex cables minimises both electric and magnetic alternating fields. Allow your hi-fi gear the most welcome benefit of all, the possibility to be silent, when supposed to. Only then, the tiniest details and notes will become clearly audible. LoRad protects both from alternating fields radiating from the cable as well as from pick-up of surrounding airborne noise fields.

- Short pitch twisting of the lead cores cancels the magnetic alternating fields and will not infect adjacent interconnects with noise feedback.
- LoRad will result in a cleaner sound, better picture and a more healthy home and working environment with low levels of harmful fields.
- The screen protects your equipment from radiated mains, RF pick-up.

CONSTRUCTION

Cable:	LoRad 3x1.5
Cross section area:	3x1.5mm ² / AWG 15
Screen:	Semi-conductive Nylon tape, black, 100%
Jacket:	PVC GA78, round
Diameter:	8.7mm
Cable colour:	Iceblue (other colours upon order)
Marking:	SUPRA LORAD 3G1.5 + Made in Sweden + Meter mark
Connectors:	SW-US Nema male to SWF-10s 15A C13 IEC320 female plug
- Pin Material:	24K Gold plated Copper
- Pin connection:	Screw/clamp
- Colour:	Anthracite Grey
Cable direction:	Nema plug to Wall socket & SWF10 to device power inlet
Rated Voltage/current:	125V / 15A
Packing:	1-2m Blister 25x21.5x4.8cm, 4m Blister 31,5x25,4x6,0cm



Note! The connector must be connected to a wall socket with a ground terminal for the full LoRad effect to take place. Lorad are tested and certified by Intertek Sweden, meeting the American ETL safety regulations & European safety regulation HD21.5 S3.

Standard lengths as below, special length cables upon order.

PRODUCT	Length	Qty	Part.no	EAN-13	Crt	Weight(kg)
LORAD 1.5 CS-US 1M	3.28ft	1PC	3004100628	7330060205835	25	0,33
LORAD 1.5 CS-US 1.5M	4.92ft	1PC	3004100610	7330060205828	25	0,38
LORAD 1.5 CS-US 2M	6.56ft	1PC	3004100636	7330060205842	25	0,43
LORAD 1.5 CS-US 4M	13.12ft	1PC	3004100644	7330060205859	13	0,74

