

LORAD 1.5 CS-US MAINS CORD SET

Screened Mains Cord Set, 125V/15A

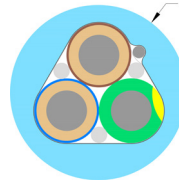
Gauge: 3x1.5mm² / AWG 15

Rev. date: 2026-04-01

Customs tariff no: 8544499500

Country of origin: Sweden

- Screened mains flex cable
- Gold plated Connectors
- Tin plated OFC wires - Corrosion resistant
- Protects both from electric & magnetic fields



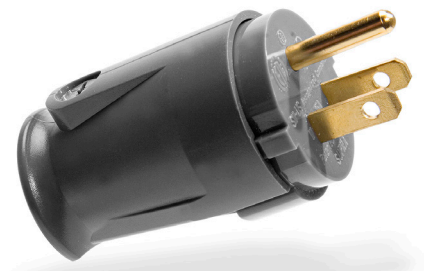
LoRad - Low Radiation

Shielded mains power cord set for US standard (NEMA 5-15), suitable for 110–250V systems. Comprises Supra LoRad 3x1.5 mm² cable, Supra SWF-10 IEC 60320 C13 female connector, and Supra MC-US male plug. Rated for continuous currents up to 15 A. Equipped with LoRad (Low Radiation) shielding to reduce electromagnetic and radio frequency interference (EMI/RFI).

- LoRad (Low Radiation) technology is designed to reduce both electric and magnetic field emissions. The tightly twisted conductors help minimise magnetic field radiation, while the shielding reduces interference from external electromagnetic and radio-frequency (RF) noise.
- This construction helps limit interference between power cables and nearby signal cables, supporting stable operation of connected equipment.

CONSTRUCTION

Cable:	LoRad 3x1.5
Cross section area:	3x1.5mm ² / AWG 15
Screen:	Semi-conductive Nylon tape, black, 100%
Jacket:	PVC GA78, round
Diameter:	8.7mm
Cable colour:	Ice blue (other colors upon request)
Marking:	SUPRA LORAD 3G1.5 + Made in Sweden + Meter mark
Connectors:	SW-US Nema male to SWF-10s 15A C13 IEC320 female plug
- Pin Material:	24K Gold plated Copper
- Pin connection:	Screw/clamp
- Color:	Anthracite Grey
Cable direction:	Nema plug to Wall socket & SWF10 to device power inlet
Rated Voltage/current:	125V / 15A
Packaging:	1-2m: 25x21.5x4.8cm, 4m: 31.5x25.4x6.0cm



Note! The connector must be connected to a wall socket with a ground terminal for the full LoRad effect to take place. LoRad are tested and certified by Intertek Sweden, meeting the American ETL safety regulations & European safety regulation HD21.5 S3.

Standard lengths as below, special length cables upon request.



PRODUCT	Length	Qty	Part.no	EAN-13	Crt	Weight(kg)
LORAD 1.5 CS-US 1M	3.28ft	1PC	3004100628	7330060205835	25	0,33
LORAD 1.5 CS-US 1.5M	4.92ft	1PC	3004100610	7330060205828	25	0,38
LORAD 1.5 CS-US 2M	6.56ft	1PC	3004100636	7330060205842	25	0,43
LORAD 1.5 CS-US 4M	13.12ft	1PC	3004100644	7330060205859	13	0,74