

LORAD 2.5 CS-US MAINS CORD SET

Screened Mains Cord Set, 125V/15A

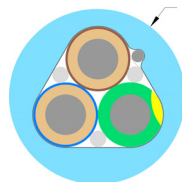
Gauge: 3x2.5mm² / AWG 13

Rev.date: 2026-04-02

Customs tariff no: 8544499500

Country of origin: Sweden

- Screened mains flex cable
- Gold plated connectors
- Tin plated OFC wires - Corrosion resistant
- Protects both from electric & magnetic fields



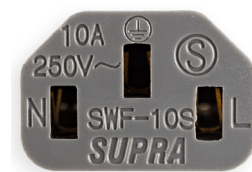
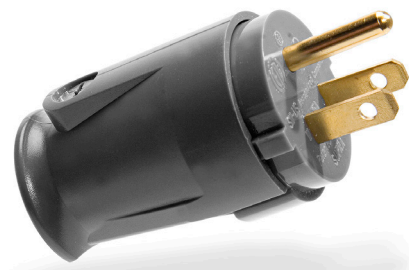
LoRad - Low Radiation

Shielded cord set comprising Supra LoRad 3 × 2.5 mm² cable, Supra SWF10 female connector (IEC-320), and Supra SW-US male plug. Rated for continuous 15 A, the US version with a straight NEMA plug meets the most common standard across North America. Compatible with Supra LoRad mains power distribution blocks. “LoRad” stands for Low Radiation — the cable’s design minimizes both electric and magnetic alternating fields, allowing your hi-fi system to operate in an electrically silent environment. Only then do the smallest details and musical nuances become fully audible. LoRad protects your system both from fields radiating from the cable and from RF pick-up of ambient electromagnetic noise.

- Short-pitch twisting of the conductors cancels magnetic fields and prevents interference with adjacent interconnects.
- LoRad ensures cleaner sound, improved picture quality, and a healthier home or workspace by reducing harmful electromagnetic fields.
- The shielding also protects connected equipment from radiated mains and RF interference

CONSTRUCTION

Cable:	LoRad 3x2.5
Cross section area:	3x2.5mm ² / AWG 13
Screen:	Semi-conductive nylon tape, black, 100%
Jacket:	PVC GA78, round
Diameter:	11mm
Cable color:	Ice blue (other colors upon request)
Marking:	SUPRA LORAD 3G2.5 + Made in Sweden + Meter mark
Connectors:	SW-US Nema male to SWF-10s 15A C13 IEC320 female plug
- Pin Material:	24K Gold plated copper
- Pin connection:	Screw/clamp
- Color:	Anthracite grey
Cable direction:	Nema plug to wall socket & SWF10 to device power inlet
Rated Voltage/current:	125V / 15A
Packing:	1-2m: 25x21.5x4.8cm, 4m: 31.5x25.4x6.0cm



Note! The connector must be connected to a wall socket with a ground terminal for the full LoRad effect to take place. LoRad are tested and certified by Intertek Sweden, meeting the American ETL safety regulations & European safety regulation HD21.5 S3. Standard lengths as below, special length cables upon request.



PRODUCT	Length	Qty	Part.no	EAN-13	Crt	Weight(kg)
LORAD 2.5 CS-US 1M	3.28ft	1PC	3004100677	7330060205873	25	0,37
LORAD 2.5 CS-US 1.5M	4.92ft	1PC	3004100669	7330060205866	25	0,48
LORAD 2.5 CS-US 2M	6.56ft	1PC	3004100685	7330060205880	25	0,58
LORAD 2.5 CS-US 4M	13.12ft	1PC	3004100693	7330060205897	13	1,04