



MAINS BLOCK MD-AUS/SP SPC BLACK

Screened Mains block with surge protection, NIF-filter & silver plated internal wiring

Rev.date: 2026-04-20

Customs tariff no: 8536901000

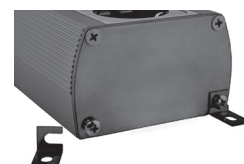
Country of origin: Sweden

SUPRA Mains Block MD-AUS/SP Silver edition

Supra LoRad MD mains blocks are designed to shield and filter noise and protect the electronic gear from surges. The NIF-filter (Non-Intrusive Filtering) is a mild RFI (Radio Frequency Interference) filter damping the high frequency noise from all sorts of modern household sources. It is possible to order with custom configuration and have a capacity to suppress noise floor up to 40 dB! The SP-models are all equipped with the Supra Surge Protection which protects all three ways; i.e. Live to Earth, Neutral to Earth and Live to Neutral. The standard surge protection manufacturer think that it is sufficient to offer only Live to Neutral protection, and they do not protect against field surges by proximate lightning strikes. The only better way to protect your equipment compared to Supra SP is to disconnect all mains power, interconnects and communications with adjacent devices completely

All parts are made in Sweden or Germany & assembled in our factory in Ljungskile, Sweden.

- SP three-way surge protection rejects close perimeter lightning & other surges
- Noise damping up to 40 dB!
- Internal wiring of 2.5 mm² silver plated oxygen-free copper leads
- Support a staggering peak power 2400 Watt @ 230 Volt and 10 Ampere
- Protect both you and your gear from various alternating fields and your gear from Surges
- Wall mounted or standing on a flat hard surface. Rubber feet and brackets included
- Custom tailored NIF-filter from Ben Duncan Research in UK
- Shielded aluminum chassis prevents electric, electro-magnetic and magnetic fields



CONSTRUCTION

Chassis:	Aluminum, black
Standard:	Australian/New Zealand Standard
Inlet socket:	SUPRA MCH-10 with fuse 10A, slow
Outlet sockets:	6 x SUPRA MCH-13/AUS
Rated Current/Voltage:	10A / 250V / 2400W
Max RFI Noise damping:	40dB, increased filtering
Internail wiring:	Silver plated 2,5mm ² OFC
Surge protection, type 3:	Uc = 2,5kV (Phase to Neutral); 4,0kV (Phase or Neutral to ground) Up = 2,0kV (Phase to Neutral); 2,05kV (Phase or Neutral to earth)
Width & height (WxH):	90x50mm
Length (L):	MD06-AUS/SP = 432mm
On/Off Switch:	Optional
Standard filtering:	No NIF-filter for outlet no 1. All outlets are surge protected. Increased filtering, the last socket got most damping



Cable not included!

All mains blocks can be ordered with or without filters for any of the sockets.

Power Amps are recommended to be connected to an unfiltered outlet.

Connect the Mains block with a LoRad cord set (10A) further reduce noise by 6-12 dB!



PRODUCT	Qty	Part no.	EAN-13	Carton Weight
MAINS BLOCK MD06-AUS/SP SPC BLACK	1PC	3024000824	7330060208232	20 1,37
MAINS BLOCK MD06-AUS/SP SPC BLK SWITCH	1PC	3024000873	7330060208386	20 1,38